



132 Fortescue Avenue Seaford VIC

3  2  2 

Architecturally Designed to accommodate all your family needs in a low maintenance private garden setting, this coastal contemporary fully renovated 3 bedroom 2.5 bathroom freestanding haven beautifully blends indoor and outdoor living with style. Completely secure with individual garden pockets that give each room a different feel, this inspiring design makes a statement with its stunning stone kitchen and generous meals area, a relaxed living room which opens onto a sun drenched backyard, a family-size laundry with powder room.

Enjoying views of the treetops, upstairs, there are 3 lovely bedrooms (BIRs) and a gleaming bathroom. With the perfect balance of light, space and garden vistas, this quality built home is appointed with R/C air conditioning,

Type : House

View : <https://www.journeyrealestate.com.au/8175324>



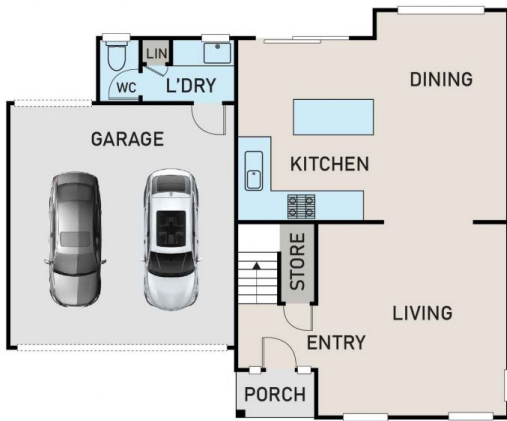
Sam Singh
03 5930 7100



Manu Sandhu
03 5930 7100

[For full version visit the website](https://www.journeyrealestate.com.au)

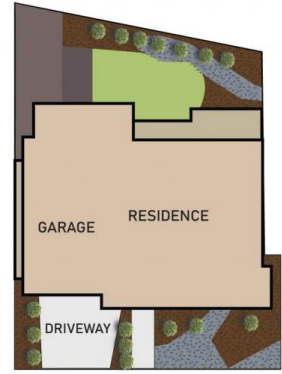
GROUND FLOOR



FIRST FLOOR



SITE PLAN



132 FORTESCUE AVENUE, SEAFORD

FLOOR AND SITE PLAN IS FOR ILLUSTRATIVE PURPOSES ONLY AND NOT TO SCALE. THE VENDOR, AGENCY OR SUPPLIER MAKE NO GUARANTEE, WARRANTY OR REPRESENTATION AS TO THE ACCURACY OF ANY INFORMATION CONTAINED HEREIN AND THE COMPLETENESS OF THE FLOOR PLANNED WILL ACCEPT NO LIABILITY FOR ITS ACCURACY. INTERESTED PARTIES ARE ADVISED TO MAKE THEIR OWN INDEPENDENT ENQUIRIES.

